

TEL: (501) 225-2014
(501) 225-2052
FAX: (501) 225-2533
AFS: MZBZYAYX
E-mail: belize.ais@civilaviation.gov.bz
WEB site: www.civilaviation.gov.bz
ADDRESS: P.O. BOX 367
BELIZE C.A

BELIZE
DEPARTMENT OF CIVIL AVIATION
AERONAUTICAL INFORMATION SERVICE



AIC
C0012/25
12th September 2025

Obstacle hazards in vicinity of the Blue Creek Community Airstrip
(VFR only)

1. Introduction

1.1 The Belize Department of Civil Aviation (BDCA) is committed to regulating and overseeing the safe operation of aircraft in Belize. In line with this mandate, the BDCA is issuing this Aeronautical Information Circular (AIC) to address the existing and potential obstacle hazards when operating in vicinity of the Blue Creek Community Airstrip.

2. Purpose

2.1 The purpose of this AIC is to alert pilots operating at the Blue Creek Community Airstrip of the existing and potential obstacle hazards along the approach path for runway 13 and departure path for runway 31, and to provide guidance for the conduct of air operations.

3. Applicability

3.1 This AIC applies to all operations conducted at and in vicinity of the Blue Creek Community Airstrip.

4. Obstacle Hazards

4.1 An existing Belize Telecommunications Tower (BTL) is located at latitude: 17° 53' 46.29" N, Longitude: 88° 53' 59.80" and height 120ft. This tower lies northwest of the airstrip, along the approach path for runway 13, and poses a hazard to low-level operations.

4.2 A second communications tower is proposed for construction at: Latitude: 17° 53' 41" N, Longitude: 88° 54' 12.9" W and height 98.4ft. When erected, this tower would further impact low level operations along the approach path for runway 13.

5. Caution to Operators

5.1 The BDCA continuously promotes aviation safety through aeronautical publications such as this AIC, the provision of applicable radio frequencies and rules of the air regulations, for pilots use when operating at uncontrolled aerodromes.

All users are reminded to visit this AIS office in accordance with the international and national standards of ICAO.

5.2 The BDCA believes that the observance of a left-hand traffic pattern for runway 13 and right-hand pattern for runway 31, will improve the safety and efficiency of the operations at the Blue Creek Community Airstrip, and provide adequate separation from the obstacles identified.

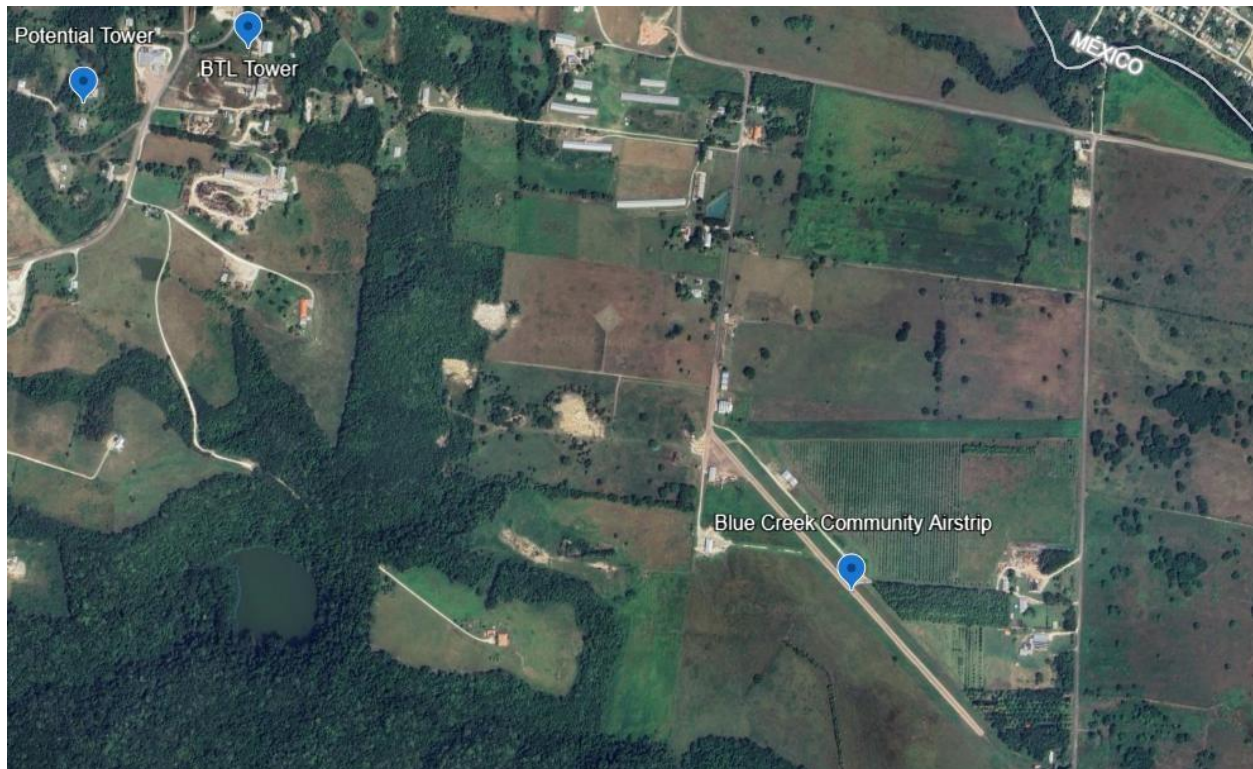
5.3 All operators are urged to exercise extreme caution when conducting approaches to runway 13 and departures from runway 31, and are reminded of the regulatory obligation to see and avoid obstacles and other aircraft, and observation of airspace boundaries.

5.4 All operators are urged to observe operating altitude when transiting near the northwest sector of the Blue Creek Community Airstrip.

6. Conclusion

6.1 The Blue Creek Community Airstrip is VFR only. Pilots are urged to conduct thorough visual inspection and lookout when operating from this aerodrome. Updates regarding any construction of obstacles will be provided to all operators, as necessary. Pilots must remain vigilant and adhere to safe flying practices.

7. Orientation



<http://civilaviation.gov.bz>

**** END ****

THIS AIC C012/25 CANCELS AIC C011/25

All users are reminded to visit this AIS office in accordance with the international and national standards of ICAO.